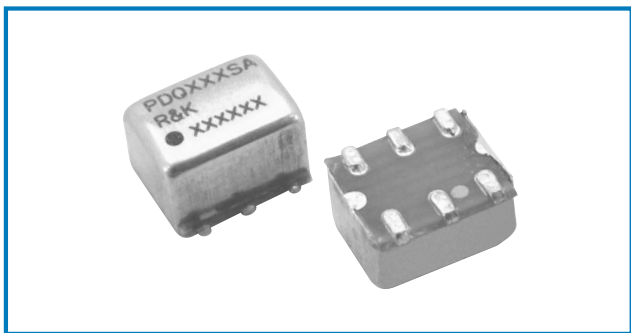
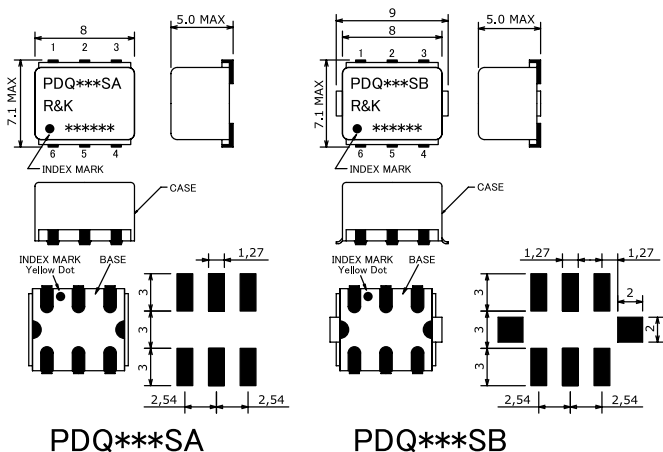


## R&K-PDQ \* \* \*



### OUTLINE DRAWING

※IN MILLIMETERS



- Center Frequency Range : 8-999MHz
- Customer Specified Center Frequency
- 2WAY-90° Low-Loss High-Isolation
- Small & Low Cost / Surface Mount
- RoHS Compliance

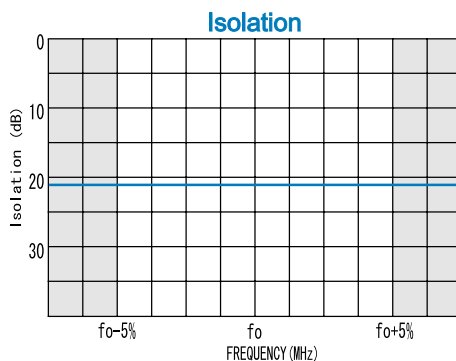
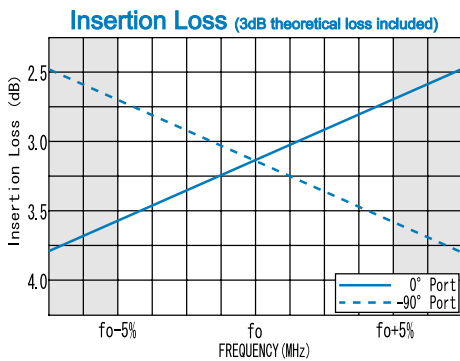
### SPECIFICATIONS

Center Frequency, $f_0$ Range	: 8-999MHz
Please Specify Exact Center Frequency Numbers as following.	
For example PDQ010SA, $f_0 = 10$ MHz	
PDQ660SA, $f_0 = 660$ MHz	
Frequency Performance	: $\pm 5\%$ of $f_0$
Coupling	: 3.0dB (nom)
Insertion Loss @ $f_0$	: 0.3dB (typ.), 0.5 (max.)
Isolation	: 19dB (min.), 24dB (typ.)
Amplitude Balance	: 1.0dB (max.)
Phase Balance	: $\pm 2.0$ deg (max.)
Phase Difference	: 90°
VSWR	: 1.3:1 (max.)
Impedance (All Ports)	: 50 $\Omega$
Maximum RF Input Power	: 1W (max.)
Internal Load Dissipation	: 0.1W
Operating Temperature	: -40°C to + 85°C
Storage Temperature	: -40°C to +100°C
Max. Reflow Soldering Temp.	: 260°C, 10sec.
Reflow Soldering Repeatability	: 3 times

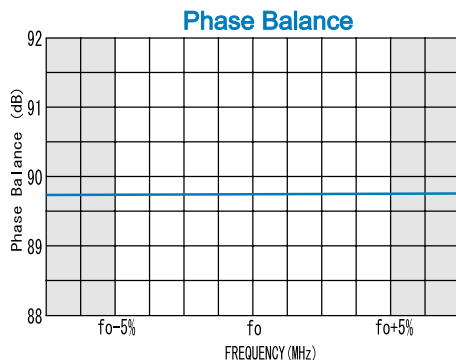
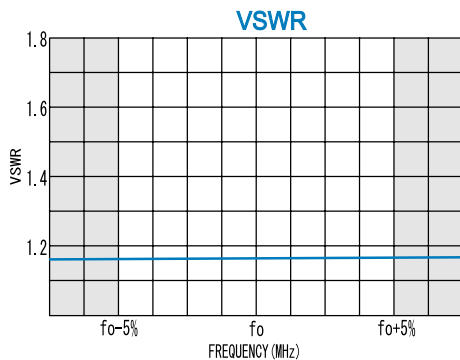
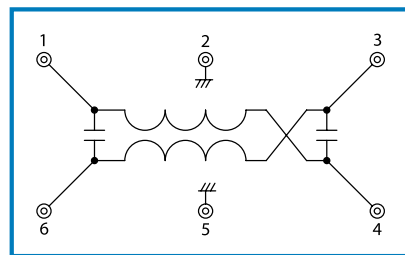
### HOW TO ORDER

Model Name	BLK=Antistatic bag
R&K-PDQ***SA-BLK	TR1=Tape & Reel Package
	SA=Case Type of SA
	SB=Case Type of SB

### TYPICAL PERFORMANCE (Temp @+25°C)



### SCHEMATIC



	SUM	ISO.	-90°	0°	GND
A	6	4	3	1	2, 5
B	4	6	1	3	2, 5
C	3	1	6	4	2, 5
D	1	3	4	6	2, 5

R&K reserves the right to make changes in the specifications of or discontinue products at any time without notice. R&K products shall not be used for or in connection with equipment that requires an extremely high level of reliability and safety such as aerospace uses or medical life support equipment. Further, R&K cannot export products to any country for use in military or defense applications.

## R&K Company Limited

721-1 Maeda, Fuji-City, Shizuoka-Pref. 416-8577 Japan  
 Tel : +81-545-31-2600 E-mail : info@rk.co.jp  
 Fax : +81-545-31-1600 URL : http://rk-microwave.com