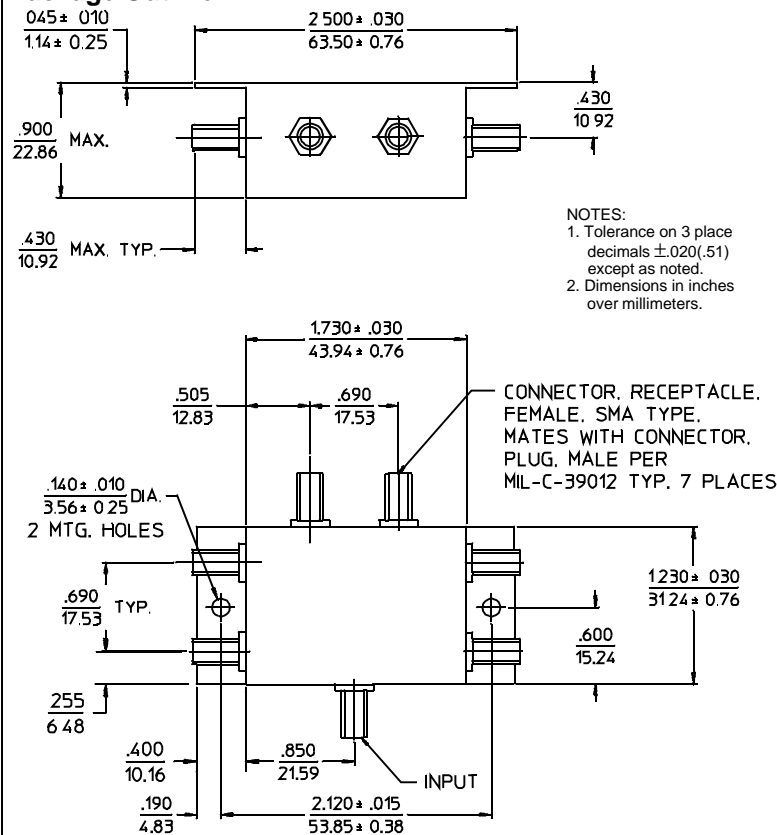


**PRINCIPAL SPECIFICATIONS**

Model Number	Frequency Range, MHz	Isolation, dB,		Amplitude Balance, dB,		Phase Balance,		Insertion Loss, dB,		VSWR In/Out	
		Min.	Typ.	Max.	Typ.	Max.	Typ.	Max.	Typ.	Max.	Typ.
PDM-60-50	1 - 100	25	30	0.4	0.2	4°	2°	1.0	0.8	1.3:1	1.2:1
PDM-60-260	20 - 500	24	30	0.6	0.3	5°	3°	1.7	1.0	1.4:1	1.2:1

**Package Outline**



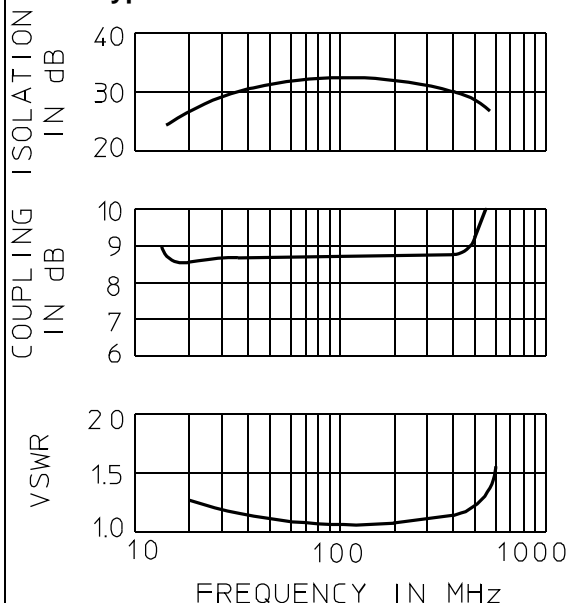
**General Notes:**

1. The PDM-60 series of 6-way In-Phase, Power Dividers/Combiners covers 1 to 500 MHz using a lumped element design for broad bandwidth and high performance.

**GENERAL SPECIFICATIONS**

Impedance: 50 Ω nom.  
 CW Input Power: 2 Watts max.  
 (When used as divider with 1.2:1 VSWR<sub>out</sub>)  
 Internal Load Dissipation: 250 mW max.  
 Weight, nominal: 3 oz. (84 g)  
 Operating Temperature: -55° to +85°C

**Typical PDM-60-260 Performance**



24May96