

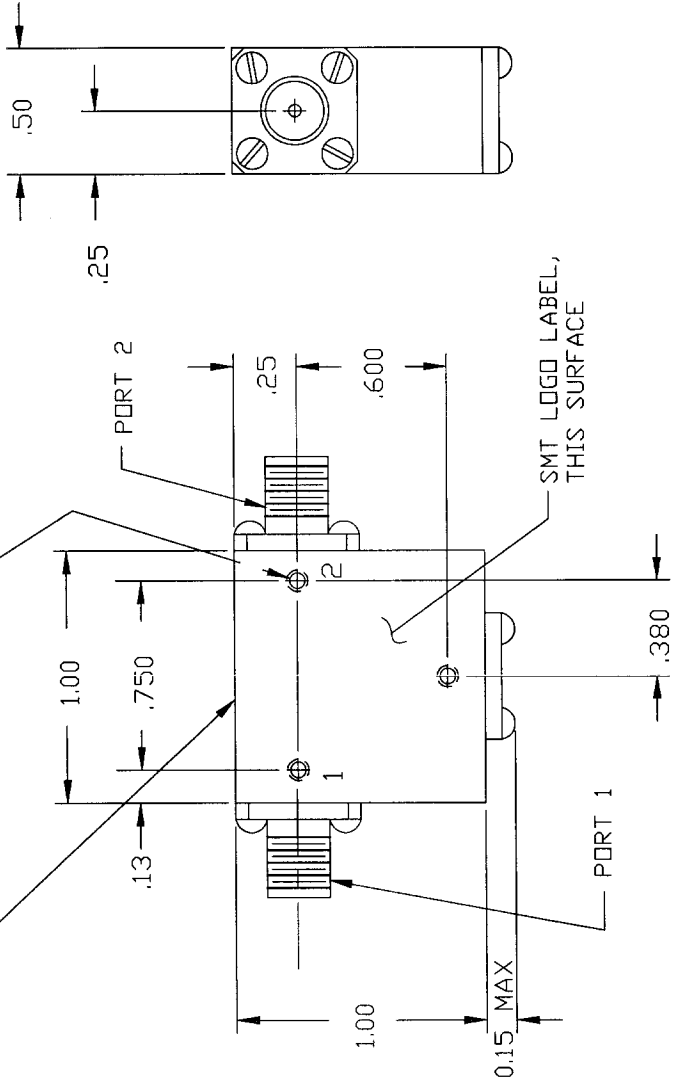
COMPUTER GENERATED DRAWING
MANUAL CHANGES NOT AUTHORIZED

REVISIONS

REV.	DESCRIPTION	DATE	RELEASED BY
NC	INITIAL RELEASE	8-02-89	T.R.
A	REV PER ECN: 4254	4-07-94	T.R.
B	REV PER ECN: 5515	3-06-98	M.T.
C	REV PER ECN: 6308	6-15-98	M.T.
D	REV PER ECN: 8346		

LABEL W/ MODEL NO.
& SERIAL NO.,
THIS SURFACE

3X #2-56 UNC-2B ∇ .13 MIN,
BOTH SIDES



SPECIFICATIONS

1. FREQUENCY RANGE.....3.0 TO 6.0 GHZ
2. VSWR.....1.30:1 MAX.
3. ISOLATION.....18 dB MIN.
4. INSERTION LOSS.....0.5 dB MAX.
5. TEMPERATURE
 - OPERATING.....-30° TO +70° C
 - STORAGE.....-65° TO +125° C

DASH NO.	PORT 1	PORT 2	PORT 3
NONE	SMA FEMALE	SMA FEMALE	TERMINATED
-1	SMA MALE	SMA FEMALE	TERMINATED
-2	SMA FEMALE	SMA MALE	TERMINATED
-3	SMA MALE	SMA MALE	TERMINATED

ITEM	QTY	FCM NO.	PART OR IDENTIFICATION NO.	NUMERATURE OR DESCRIPTION	MATERIAL SPECIFICATION
PARTS LIST					
UNLESS OTHERWISE SPECIFIED DIMENSIONS ARE IN INCHES DIMENSIONS IN PARENTHESES ARE ANGLES FINISHES: .02 & .004 .010			CONTRACT NO.		
MATERIAL:			APPROVALS		
FINISH:			DATE		
DO NOT SCALE DRAWING			DRAWN: T.ROSE 8-1-89		
APPLICATION			CHECKED: J. DARJES 8-1-89		
LIST OF MATL. USED ON			DESIGNED BY: M.T. RODRIGUEZ 8-2-89		
204-0142-001 SMI3060-3			MATERIAL SPECIFICATION		
204-0339-001 SMI3060-1B2			TITLE		
204-0190-001 SMI3060			SIERRA MICROWAVE TECHNOLOGY		
LIST OF MATL. USED ON			OUTLINE FOR SMI3060-X		
APPLICATION			SIZE FROM NO. B 1CY63		
LIST OF MATL. USED ON			DWG NO. 205-0688-001		
APPLICATION			REV D		
LIST OF MATL. USED ON			SHEET		
APPLICATION			OF		