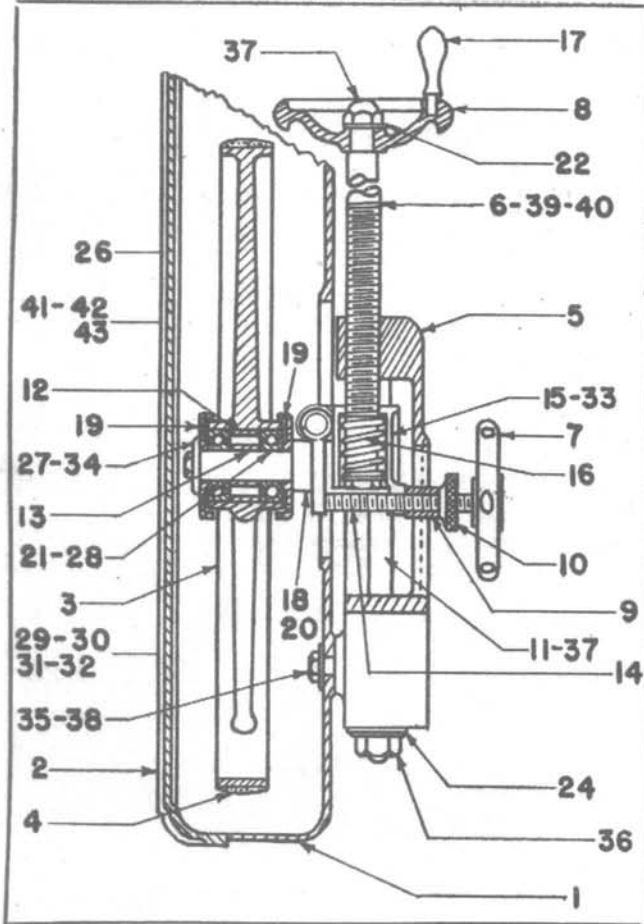




3 2 1 0 A N D 3 2 2 0

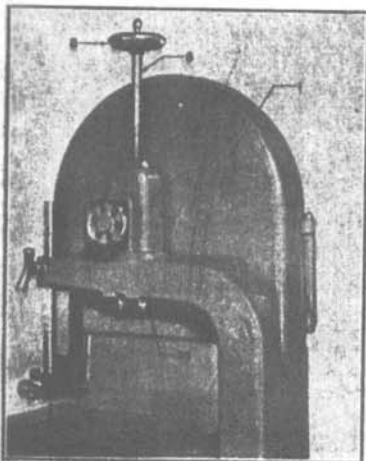


PARTS LISTING

Key #	Part #	Illustration 1 & 2
3	32M7	Upper Wheel (Note 1).....
4	32-16	Tire Only.....
12	251-7	Outer Bearing Spacer.....
13	252-3	Inner Bearing Spacer.....
18	32A9	Idler Shaft Bracket (Note 2).....
19	243-1	Dust Collar (2).....
21	32A9	Idler Wheel Shaft (Note 2).....
27	242-10	Flange Washer.....
28	370-22-2	Ball Bearings (2).....
34	200-11	Oil Hole Cap Screw.....
5	32-19	Tensioner Housing.....
6	32-11	Raising and Lowering Screw.....
7	211A2	Alignment Screw and Hand Wheel... ..
8	363A3-4	Hand Wheel.....
9	250-1	Alignment Screw Spacer.....
10	223-1	Lock Nut.....
11	213-1	Support Column (2).....
14		Incl. in 211A2.....
15	32C10-2	Wheel Adj. Brkt (Note 3).....
16	310-1	Tension Spring.....
17		Handle Incl. in 363A3-4.....
20	290-4	Bracket Pin.....
22	244-2	Key Washer.....
24	240-11	Flange Washer (2).....
30	377-9	Bronze Bearings (2).....
36	541-32	Hex. Nut (2).....
37	228-7	Crown Nut (3).....
39	545-30	Hex. Jam Nut.....

(cont'd on page 2)

Wheel Alignment and Blade Tension



All Walker-Turner Band Saws are carefully inspected during manufacture and tested when final assembly is completed. It is quite possible, however, for the machines to get out of alignment while in transit. For this reason the machine should be carefully checked and adjusted, if needed, before putting the machine into operation. A carefully set-up machine will give far superior results to one

from the blade. Loosen guide roller and slide it as far back as it will go. Turn machine by hand and note tracking position of blade. (Turn machine so that blade travels down through the table, as it does under actual working conditions.)

The blade will not track unless tension is sufficient to make the blade taut. Handwheel No. 8 in the photograph at the left controls the blade tension by moving the upper wheel assembly up or down as required. Handwheel No. 7 controls blade alignment by tilting the upper wheel. Turning the wheel to the right tilts the upper edge of the wheel in, causing the blade to run toward the back of the rim; turning the wheel to left has the opposite effect. When aligning the blade turn wheel No. 7 slowly as it is extremely sensitive.

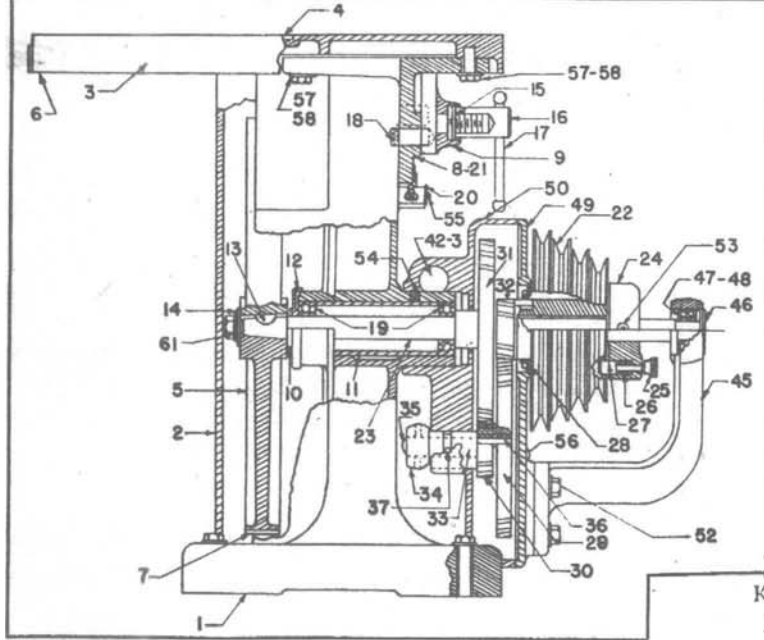
Narrow blades require more tension and accurate aligning than wide blades. With a little experience in changing blades the operator will soon become familiar with the adjustments required and the correct tension to apply to the blade.

When replacing blades the table clip, which will be found underneath the table edge at the end of the saw slot, must be removed in order to get the blade free. Be sure to replace the clip as it is necessary to keep the table true. Full instructions for adjusting both upper and lower guides will be found inside of this sheet.

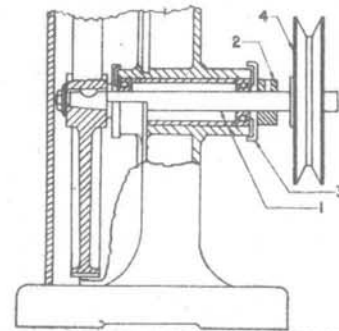
that is carelessly set up.

The band saw blade should "track" on the center of the rims of both upper and lower wheels. It should run with enough tension to hold this position and to remain rigid when pressure is applied to it.

To check blade alignment or when replacing a blade the following procedure should be followed. Loosen the guide blocks in both blade guides and move them away



LOWER
WHEEL
ASSEMBLY



LOWER WHEEL ASSEMBLY FOR 3210 ONLY

1	32-14	Drive Shaft.....
2	254A19	Collar.....
3	33-107	Drive Shaft Collar (2)....
4	341A1	Drive Shaft Pulley.....

Parts shown but not indicated will be found on illustration at left.

#	Part #	(Illustration 1 & 2)
	560-28	I. D. Flat Washer.....
	246-1	Felt Washer (2).....
32M3 UPPER WHEEL GUARD ASSEMBLY (III, 1 & 2)		
		Wheel Housing (Not sold alone).....
		Housing Cover (Not Sold alone).....
	291-1	Hinge Stud.....
	211-3	Cover Locking Stud.....
	222-1	Cover Handle Stop Collar.....
	240-86	Washer.....
	501-2412	Cap Screw (2).....
	560-24	I. D. Flat Washer (2).....
32A1 MAIN FRAME ASSEMBLY (III, #3)		
		Frame Only (Not sold alone).....
	201-1	Table Segment Guide (2).....
	321-8	Indicator Point.....
	525-3205	Allen Screw (2).....
	508-1305	Round Head Screw.....
LOWER WHEEL & BEARING ASSEMBLY (3220 ONLY)(III, #3)		
	32M13	Wheel and Tire.....
	32-15	Tire only.....

Key #	Part #	
10	240-30	Wheel Spacer.....
11	251-5	Bearing Spacer.....
12	33-107	Drive Shaft Collar.....
13	301-7	No. 7 Woodruff Key.....
14	240-92	Washer.....
19	370-8-1	Ball Bearings (2).....
23	32-6	Drive Shaft.....
61	545-34	Hex. Jam Nut.....
GEAR UNIT ASSEMBLY FOR 3220 ONLY (III, #3)		
24	32A60	Pulley Hub (Note 6).....
25	360-6	Hand Nut (Note 6).....
26	310-32	Hub Plunger Spring (Note 6).....
27	33-105	Hub Plunger (Note 6).....
28	270-6	Oil Seal.....
29	330C11	Reduction Idler Gear 94 T. (Note 4)..
30	330C11	Reduction Idler Gear 30 T. (Note 4)..
31	330A13	Reduction Drive Gear 94 T.....
32	344A27	Reduction Drive Gear 30T. (Note 5)..
22	344A27	Pulley (Note 5).....
33	33-106	Gear Lever Cam. Incl. in 330C11.....
34	362-6	Gear Shift Lever Incl. in 330C11.....
35	299-8	Gear Lever Cam pin Incl. 330C11

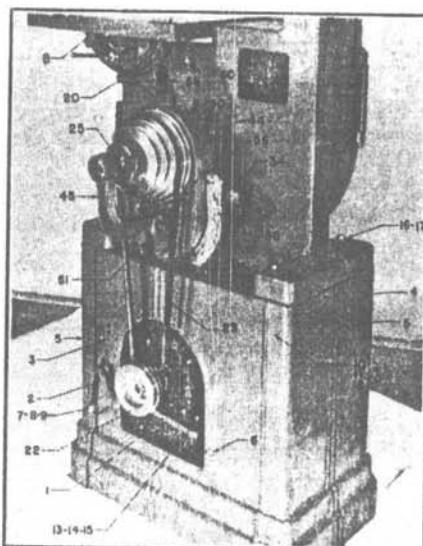
Key #	Part #	
36	377-22	Bronze Bearings.....
37	202-10	Gear Lever Cam Screw.....
38	32-70	Shift Lever Segment.....
39	212-13	Shift Lever Plunger.....
40	310-21	Plunger Spring.....
41	365-18	Hand Knob.....
42	231-7	Locking Plug.....
43	230-6	Locking Plug.....
44	213-11	Locking Stud.....
45	32A65	Drive Shaft Bracket.....
46	32-66	Drive Shaft Bracket Plug.....
47	370-12	Ball Bearing.....
48	32-67	Bearing Collar.....
49	33-133	Gear Housing Cover.....
50	32-64	Gear Housing.....
51	217-1	Belt Guard Stud.....
52	501-2416	Hex Bolt (3).....
53	525-2006	Allen Screw (2).....
56	610-1608	Fillister Head Screw (11).....

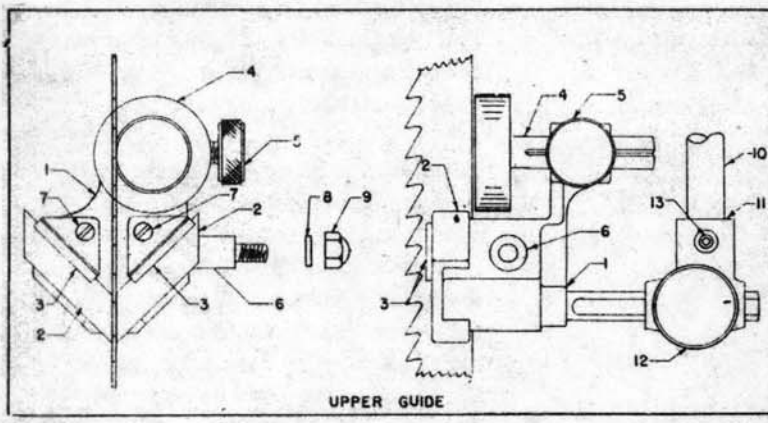
Lubrication

The machine is thoroughly lubricated at the factory and should not require attention for one year of ordinary operation. The lower wheel is journaled on two grease sealed ball bearings. Additional grease can be applied when needed by removing set screw No. 54 shown in the illustration in the upper left hand corner of this page. When lubrication of the upper wheel is required, remove plug from bolt No. 14 (see line drawing on first page) and apply grease through hole in pindle.

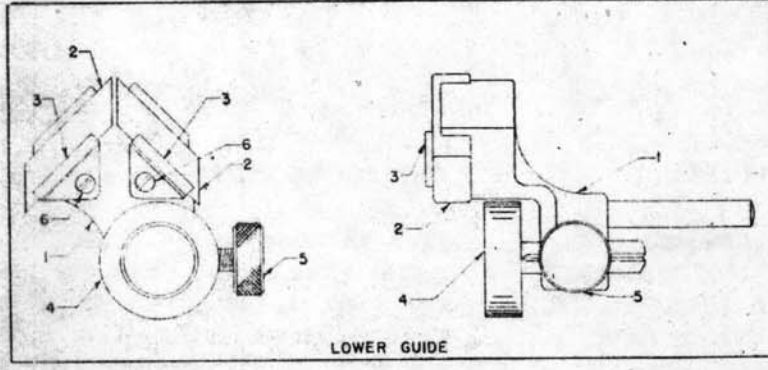
Light machine oil should be applied to all other moving parts from time to time to keep them operating freely and also as a preventive of rust.

The gear housing on Model No. #BN905 is packed with sufficient grease for one year of operation. When lubrication is required, remove housing cover, clean out the old grease and re-pack with two cans of SLS Lubricant.





UPPER GUIDE



LOWER GUIDE

32C16 UPPER GUIDE COMPLETE

(Specify for metal or wood)

- 1 32A58 Guide Brkt and Stud.....
- 2 32-53 Guide Blocks (for Wood).....
- 32-55 Guide Blocks (for Metal).....
- 3 32-54 Guide Block Clip (2).....
- 4 32-75 Ball Bearing Guide Roller.....
- 5 206-2 Roller Lock Screw.....
- 6 214-2 Front Guard Stud.....
- 7 509-1308 Rd. Hd. Screw (2).....
- 8 560-20 Flat Washer.....
- 9 552-20 Crown Nut.....
- 10 32-30 Guide Support Rod.....
- 11 33-18 Guide Rod Elbow.....
- 12 211A6 Guide Lock Screw.....
- 13 525-2406 Allen Screw.....

33A109 TELESCOPING FRONT GUARD

32C17 LOWER GUIDE COMPLETE

(Specify for metal or wood)

- 1 292A3 Guide Bracket & Stud.....
- 2 32-53 Guide Blocks (for Wood).....
- 32-55 Guide Blocks (for Metal).....
- 3 32-54 Guide Block Clip (2).....
- 4 32-75 Ball Bearing Guide Roller.....
- 5 206-2 Roller Lock Screw.....
- 6 509-1308 Rd. Hd. Screw.....

- | Key # | Part # | Description |
|-------|----------|----------------------------|
| 60 | 541-16 | Hex. Nut (3)..... |
| 3 | 32-28 | Table..... |
| 4 | 32-31 | Table Insert..... |
| 6 | 32-32 | Table Clip..... |
| 8 | 32-29 | Table Tilting Bracket..... |
| 9 | 32-50 | Table Locking Segment..... |
| 15 | 214-1 | Segment Stud..... |
| 16 | 216-1 | Segment Clamp Nut..... |
| 17 | 292-9 | Clamp Nut Handle..... |
| 21 | 381-1 | Table Tilting Gauge..... |
| 57 | 501-2416 | Hex Bolt (3)..... |
| 58 | 560-24 | I. D. Flat Washer (3)..... |

CAT. #32C22 BASE W/MOTOR BRKT. (Ill. #5)

- | | | |
|----|--|-----------------------------|
| 1 | 32-22 | Motor Plate..... |
| 2 | 32-51 | Motor Plate Segment..... |
| 3 | 390-17 | Base Partition (Rear)..... |
| 4 | 390-16 | Base Partition (Front)..... |
| 5 | 390-15 | Base End Piece (2)..... |
| 6 | 290-1 | Motor Plate Shaft..... |
| 7 | 210-3 | Segment Locking Stud..... |
| 8 | 552-34 | Acorn Nut..... |
| 9 | 561-32 | Flat Washer..... |
| 10 | 509-2020 | Oval Head Screw (8)..... |
| 11 | 541-20 | Hex. Nut (8)..... |
| 12 | 563-20 | I. D. Lock Washers (8)..... |
| 13 | 500-2028 | Sq. Hd. Bolts (4)..... |
| 14 | 541-20 | Hex Nuts (4)..... |
| 15 | 560-20 | I. D. Flat Washer (4)..... |
| 16 | 501-2444 | Hex. Bolts (4)..... |
| 17 | 541-24 | Hex. Nuts (4)..... |
| 22 | CAT. #344A8 MOTOR PULLEY 5/8" BORE FOR 3220, | |
| 23 | CAT. #351-51 48" V BELT..... | |
| | CAT. #341A33 MOTOR PULLEY 5/8" BORE FOR 3210, | |

NOTE #1

32M7 Wheel sold as assembly including tire and spacer which are available separately.

NOTE #2

32A9 Idler Shaft and Bracket sold only as assembly. Not sold separately.

NOTE #3

32C10-2 Wheel Adjusting Bracket sold including Bushings #377-9 (2) only.

NOTE #4

330C11 Gear Assembly includes 94 tooth and 30 tooth Idler Gears assembled. Never sold separately. Also included are part numbers 33-106 Cam, 299-8 Pin and 377-22 Bushing.

NOTE #5

344A27 includes 4 step pulley and 30 tooth Drive Gear assembled. Never sold separately.

NOTE #6

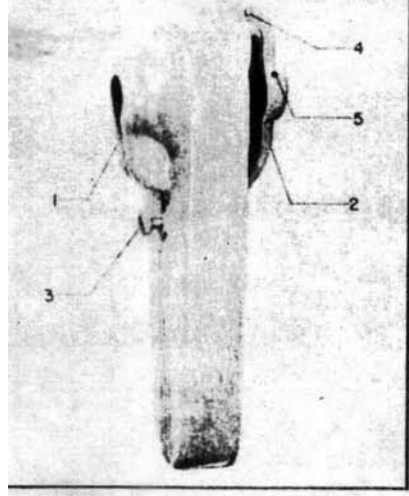
32A60 Pulley Hub includes 360-8 Nut, 310-22 Spring, 33-105 Plunger and 571-0606 Pin. When ordering plunger components you must order nut, plunger and pin to be able to assemble.

Parts Listing

Key #	Part #	(Illustration #8)
CAT. #32C24 BELT GUARD		
1	32-24	Belt Guard,.....
2	32-56	Guard Bracket,.....
3	360A2	Lock Handle,.....
4	291-2	Bracket Pin,.....
5	525-2406	Allen Screw (2)....

The Belt Guard No. 32C24 can be used in conjunction with either the vertical or horizontal belt drive set-up.

To attach the guard remove the pulley from the drive shaft of the machine and slide guard over the shaft until bracket is in position on the machined boss of the bearing housing. Tighten set screws No. 5 to secure guard in position. To replace the pulley loosen lock screw No. 3 and swing guard up until the drive shaft is accessible.



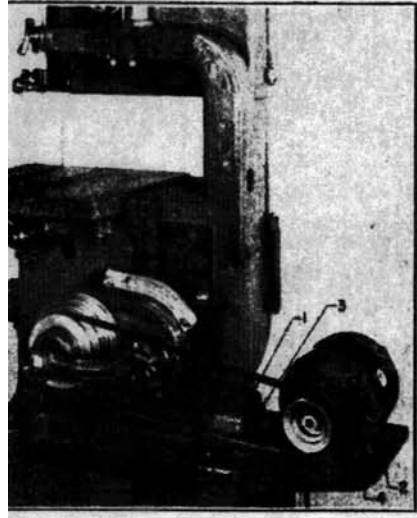
Parts Listing

Key #	Part #	(Illustration #9)
CAT. #32C23 MOTOR BRACKET		
1	32-23	Motor Plate Brkt,....
2	32-57	Motor Plate,.....

Includes nuts, bolts and washers not illustrated.

THE 32C23 MOTOR BASE

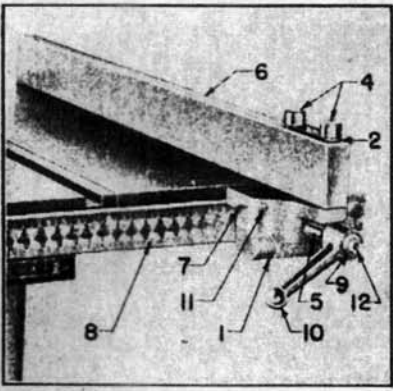
Also an accessory the 32C23 Motor Base is intended for use with either 3210 or 3220 Band Saws when they are not mounted on the 32C23 Base. The frame of the Band Saw is drilled and tapped to accommodate the three cap screws that hold the base in place.



PARTS LISTING

Key #	Part #	(Illustration #10)
CAT. #32C41 RIP FENCE AND BAR		
1	32-41	Rip Guide Carriage,...
2	561-28	Washer,.....
4	501-2948	Rip Guide Bolt (2)....
5	204-10	Carriage Locking Stud
6	21-40	Fence,.....
7	320-11	Indicator Point,.....
9	240-87	Bevel Washer,.....
10	362-1-2	Lock Handle,.....
11	525-1308	Screw,.....
12	501-2116	Hex Bolt,.....
8 Cat. #32C26	Rip Fence Support Bar Specify R or L (includes studs and nuts)	

The No. 32C41 Rip Fence is available as an accessory for both 3210 and 3220 Band Saws. The two bolts No. 6 are loosened to adjust the fence when necessary to align it with the blade. The Rip Fence support is supplied in two pieces so that it does not have to be removed from the table when removing or replacing the blades.



RIP FENCE

General Instructions

The table on this machine can be tilted 45° to the right and 10° to the left. Check table position with a tri-square resting on the table with the blade of the square held against the side of the saw blade behind the teeth. Corrections can be made if necessary by moving the indicator point or the graduated scale. Having definitely checked the 90° position, adjust the stop screw under the table if necessary. A second stop at the 45° position should also be checked and set. To tilt the table to the left remove the knurled head which will be found on the 90° stop.